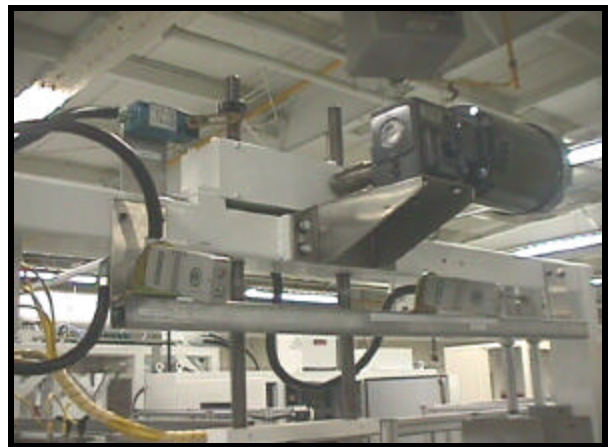


.... More Edson Features & Options



Open Flap Detection – a simple array of adjustable sensors at the case discharge of the Edson case packer are tuned to detect if the flaps have been securely sealed. Should an open flap be detected, the machine can be programmed to react accordingly.



Motorized Machine Adjustments – for fast machine changeover to new products, Edson can provide motorized (ac or servo) adjustments on the major axes of the case packer, thus reducing changeover time and increasing set up repeatability. Available as a retrofit.



Tool-less Change Over & Quick Adjustments
– Edson minimizes the need for special tools or often, any tools to perform the typical product/case change over, by using Kipp handles and metered hand wheel adjustments.

Ease of access and ergonomics are a consideration for not only the adjusting devices, but the change-over parts, to enhance production time and reliability.



Continuous R&D - Edson's history is rooted in Continuous Development, that have made our machines faster, smoother, more flexible. You gain your competitive advantage from our passion for always looking for a better way. Edson's packaging automation creativity is brought to life by a full range of engineering tools, and Rapid Prototyping capability, to be first to market with proven technology.

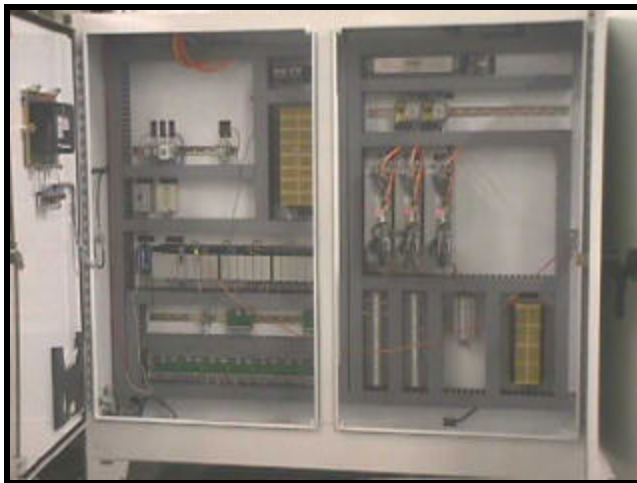
... More Edson Features & Options



Positive Top Flap Opener – A mechanical device which positively opens the top flap of the erected case, to allow it to engage properly with the packing chute. The TF Opener is fully adjustable for the range of case sizes.



Mechanical Inside Case Former – The Edson Inside Case Former is a mechanical case erector that engages an articulating former blade in between the KDF panels. Easy to set up and excellent for large cases, or cases with overglued flaps. More positive than vacuum openers.



Quick Power Connections – For 'plug & play' versatility, Edson offers industrial multi-pin electrical connectors to provide fast system installation, and a substantial time reduction for field debug.

In addition, Edson can provide 'lay in' cable tray or enclosed duct for the routing of control wiring, high voltage cable and servo drives.



Case Handling Automation – Edson provides a full range of designs for case handling after the Edson case packers. In addition to case re-orienting devices, Edson can integrate bar code scanners, label printers (ink jet & p&a), case queuing and case reject/transfer automation.

 **EDSON**

PACKAGING MACHINERY

TEL: 905.385.3201
EMAIL: VALUE@EDSON.COM .

215 HEMPSTEAD DR, HAMILTON, ON, L8W 2E6 CANADA

FAX: 905.385.8775
WEB: EDSON.COM